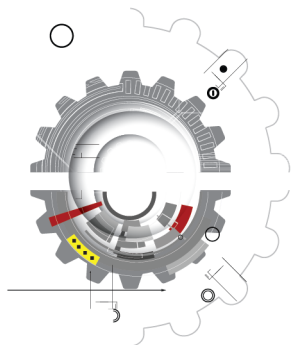




► Built for a *Lifetime*



# CNC Machining Center Specifications

## VGM 1206 Metal Machining Center



### Komo Machine, Inc.

1 Komo Drive  
Lakewood, NJ 08701 USA  
Phone: 732-719-6222  
Toll Free: 800-255-5670  
Fax: 732-579-5443  
E-mail: [info@komo.com](mailto:info@komo.com)



[www.komo.com](http://www.komo.com)

## Machine Construction

### Frame

The machine frame is constructed of heavy wall, structural steel tubing. The frame has been designed and analyzed using Finite Element Analysis (FEA) to provide a rigid and stable machining platform.

The frame components are stress relieved prior to machining. Machining is performed using a high precision machining center, capable of five sided machining in one set-up to insure parallelism and perpendicularity of the final product.



### Table / Work Surface

A variety of table options are available, including a non-machined aluminum table or with Keensert inserts or machined with a universal grid and vacuum system, or a steel table with "T" slots.

### Work Area Dimensions

Depth (1206) .....72" (1829mm)  
Depth can be increased in 72" (1829mm) sections  
Width .....144" (3658mm)

### Axis Configuration

The machine is configured with a traveling gantry, stationary table design.

Y and V axis (gantry) motion is accomplished via dual precision ball screw assemblies mounted on each side of the base frame, driven by digitally synchronized FANUC Alpha HVI servo motors.

X axis motion is accomplished via precision ball screw assembly and powered by a FANUC Alpha HVI servo motor.

Z axis motion is accomplished via precision ball screw assembly and powered by a FANUC Alpha HVI servo motor.

The Z axis is supported by a pneumatic counterbalance system.

Each axis is mounted on precision linear guide ways with pre-loaded precision bearing trucks.

Travel positioning is maintained via the controller reading 1,000,000 pulses-per-revolution absolute encoders mounted on each servo motor.

## Automatic Lubrication System

All positioning bearings, ball screws and racks are serviced by a centralized automatic lubrication system, activated directly by the machine control, the method recommended by the ball screw and linear guide way manufacturers.



## Automatic Tool Changer

Each machine is supplied with a 15 station tool changer. The tool changer is powered by a Fanuc servo motor for fast, reliable tool changes.

The VGM 1206 can be equipped with up to four (4) tool changers for a total of 60 positions.

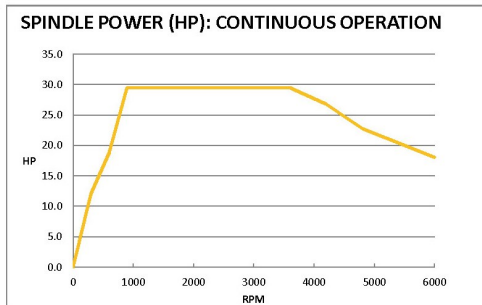
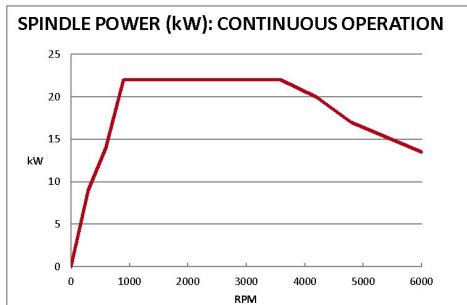
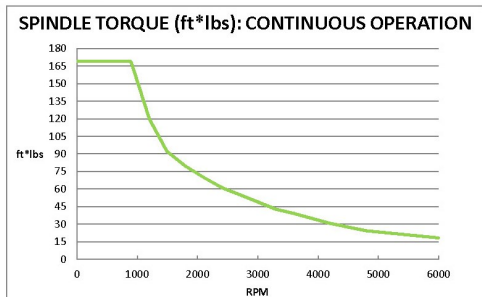
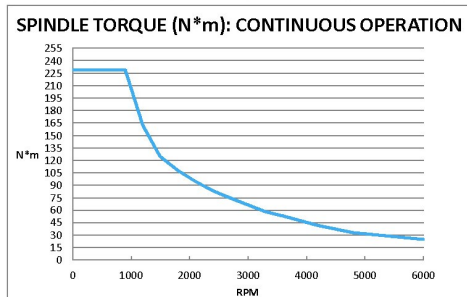


## Spindle Configuration

KOMO uses only the highest quality spindles on the entire machining center product line. Each spindle must meet exacting specifications, and is subject to a strict inspection process prior to being accepted into inventory.

The main spindle is a CAT40 belt-driven spindle powered by a Fanuc spindle motor.

CAT40 - 6,000 RPM  
29.50HP (22kw) S1  
34.81HP (26kw) S3



A variety of HSK spindle configurations are available for high speed machining applications.

## Control

The machine features the latest version Fanuc 32i-MB control with integrated PC front end. As a Fanuc Authorized CNC System Integrator, KOMO has been installing Fanuc controls on our machines for over 30 years. We have worked closely with them to bring improvements and innovations to our products, resulting in some of the highest acceleration/deceleration rates and raw servo accuracies in the industry.



### Control Features

#### **Primary Features**

- High-speed industrial CNC
- Network compatible
- Windows® 7
- 4 GB RAM

- High-speed serial bus
- USB port
- 120 GB solid state hard drive
- 512k (1280M) part program memory

#### **Operator Interface**

- 19" color touch screen monitor
- Run hour / parts count display
- Actual feed rate display
- Alarm / operator message display
- Spindle load meter

- Controller keyboard
- Current position display
- Vacuum gauge
- Remote diagnostic capability
- KOMO Production Manager software

#### **Manual Override Features**

- Full function hand wheel (MPG)
- Feed rate override
- MDI operation

- Traverse override
- Spindle override

#### **Features to Simplify Programming**

- Absolute / incremental programming
- Dry run
- Background editing
- Helical interpolation
- Tool length compensation
- 54 work coordinates
- Extended part program editing
- Cutter compensation type C
- Canned cycles

- 99 tool length offsets
- Linear / circular interpolation
- Inverse time feed
- Dwell (G4)
- Inch / metric capability
- Optional block skip
- Pattern data input
- Tool offset memory type C

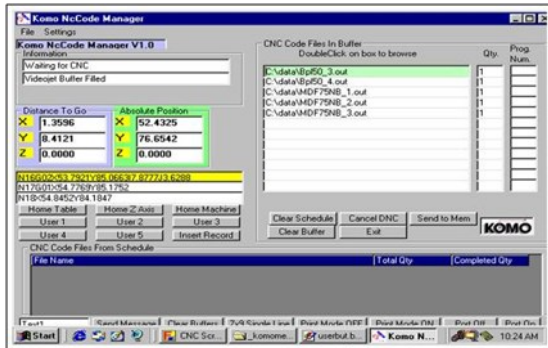
#### **Enhanced Accuracy / Speed / Part Finish**

- APC - Advanced Preview Control
- Backlash compensation
- High speed skip

- Simultaneous 4 axis control
- Fanuc Alpha HVI servo motors
- AI advanced preview control

## KOMO Production Manager Software

Each machine includes KOMO's exclusive Production Manager Software with Intelligent Spoil Board Management®. This productivity feature takes the guesswork out of managing your spoil board, insures optimum performance of the flow-through vacuum system when nesting and provides a fast and efficient way to load programs into your CNC machining center.



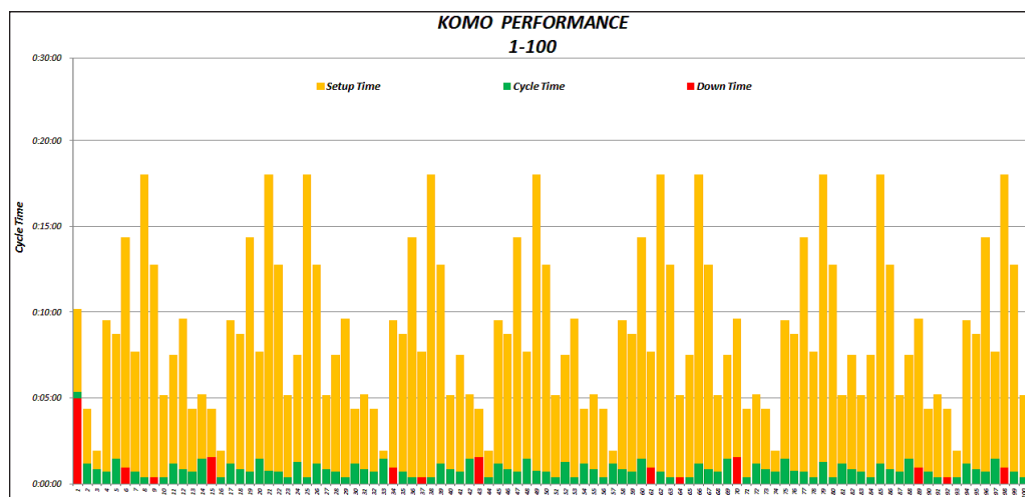
Intelligent Spoil Board Management

- User programmable buttons allow fast access to most commonly used programs
- Send programs to control memory in just seconds
- Ability to save partially run Schedule files due to production interruption
- Multiple file select and drag-and-drop support
- See your programs running on the control without switching screens



## KOMO Machine Monitoring Software

Each machine now ships with KOMO's exclusive software that captures the machine's production data without any input from the operator. Specific events are recorded throughout the day, which are later imported into a spreadsheet and analyzed. This data is then graphically displayed, which can help to identify problem areas. The software starts up with the machine every morning, and is password protected against being disabled by the operator. This software also includes Tool Life Monitoring, which will visually warn the operator as each tool is nearing its end of life expectancy.





## Safety

A safety light beam is mounted to the front and rear of the moving gantry, and Emergency Stop pushbuttons are installed in several locations.

## Standard Machine Specifications

### Machine Space - Overall with Guarding

Depth .....	144" (3658mm)
Width .....	244" (6198mm)
Height .....	138" (3505mm)
Spindle nose to table at Z+ .....	28" (711mm)
Spindle nose to table at Z- .....	4" (102mm)
Table height (floor to table top) .....	24" (607mm)
Weight .....	35,000lbs (15,910kg)

### Table

Depth (1206) .....	72" (1829mm)
Width .....	144" (3658mm)

### Travels

X Axis .....	151" (3835mm)
Y/V Axes (1206) .....	75.25" (1911mm)
Z Axis .....	24" (610mm)

### Feed and Traverse Rates

X Axis .....	2000 ipm (50.8 mpm)
Y/V Axes .....	2000 ipm (50.8 mpm)
Z Axis .....	735 ipm (18.7 mpm)
Acc/Dec .....	83.3 in/sec <sup>2</sup>

### Spindle / Tool Changer

Speed .....	6000 RPM
Power (S1) .....	29.5HP (22kW)
Power (S3) .....	34.8HP (26kW)
Tooling .....	CAT40
Tool changer .....	15 stations
Drive system .....	Precision gear box with Fanuc servo
Maximum diameter (adjacent pockets full) .....	3.25" (82mm)
Maximum diameter (adjacent pockets empty) .....	6.5" (165mm)
Maximum weight (per tool) .....	12lbs. (5.4kg)
Maximum weight (full carousel) .....	96lbs. (43.5kg)
Maximum tool length (70mm tool holder) .....	10.5" (266mm)
CAT40 Retention knob ref:	
Command RC4E-0001 .....	KOMO 053785-00
Retention Knob Supply 111-22 .....	KOMO 053785-00

The VGM 1206 can be equipped with up to four (4) tool changers for a total of 60 stations.

## **Drive System**

X, Y/V, Z Axes .....	Fanuc Alpha HVI digital servos
X Axis .....	Precision ball screw, 50mm
Y/V Axes .....	Precision ball screw, 40mm
Z Axis .....	Precision ball screw, 40mm
Lubrication .....	Automatic grease lubrication

## **Linear Guide Ways**

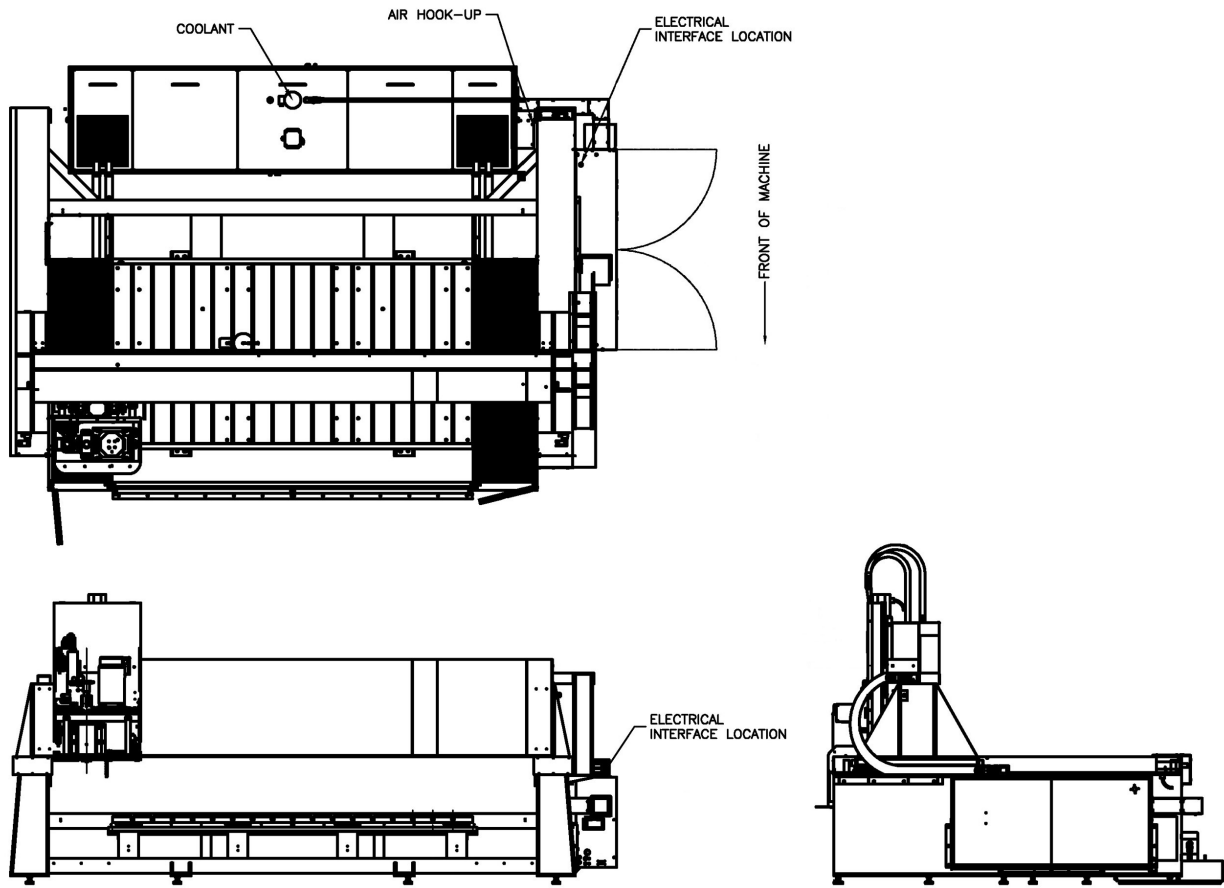
X Axis .....	45mm, six (6) bearing trucks
Y/V Axes .....	45mm, eight (8) bearing trucks
Z Axis .....	45mm, six (6) bearing trucks
Lubrication .....	Automatic grease lubrication

## **Accuracies**

Unidirectional linear axis positioning (per meter) .....	$\pm 0.0006"$ ( $\pm 0.015\text{mm}$ )
---	--

Machine-specific drawings are available on request.

*All specifications are based on the standard machine configuration. Any options or changes may result in modifications to the machine specifications.*



## Power and Air Requirements

### Electrical Requirements

Machine is 480 volts. Amp rating will be supplied with the New Owner's Manual. Contact Komo Machine for new amp rating if any alterations are made to the head configuration and for transformer requirements.

Vacuum pump will require a separate electrical connection. Amp rating will be supplied with the New Owner's Manual and will vary depending on size and voltage of pump selected.

Plant wiring required: 440/480 volt, 3 phase circuit brought to main machine disconnect. Full load amperage varies based on spindle options. Electrical inspections required by state and local governments are the responsibility of the customer and are not included in this machine quotation unless specified.

All major electrical components are housed in a NEMA 12 electrical enclosure equipped with an industrial grade air conditioning system to prevent premature component failure.

### Air Requirement

Machine requires 22scfm (900ml per minute) maximum usage, pressure is 90-95psi (7 bar) of filtered, dry air.

### Ambient Working Temperature

41° - 95° Fahrenheit (5° - 35° Celsius)

## Installation

Installation of the machine will be performed by a Factory Trained and Certified Technician. Once the machine has been positioned, the technician will level the machine, perform power up and conduct a thorough pre-production test routine.

After the machine has been installed and tested, the technician will provide daily maintenance instruction and review machine operation. Travel and living expenses of technician are included with machine purchase.

## Machine Training

Machine Operation training is provided at Komo Machine for up to two (2) persons for three (3) days. Each seat of training is available for one (1) year from machine installation.

**Note: Customer is responsible for travel and living costs for all training programs.**

## Support

A Control Operator's Manual and a KOMO Operation and Maintenance Manual are supplied in CD-ROM format and are also loaded on the machine hard drive for access from the operator control station. Electrical schematics are provided in hard copy format.

Also included with each machine is our world class **24/7/365 toll free technical support**. As part of this support system, each machine comes equipped with Remote Diagnostics capability, allowing a KOMO Support Technician to "dial into" your machine to assist in troubleshooting and minimize response time to correct a problem.

## Warranty

Each machine includes the KOMO **standard two year warranty**. See the Terms and Conditions document for full information.



## Machine Options

### Enclosure / Chip Collection Options

#### **Dual Augers**

Augers situated on the sides evacuate chips from the chip enclosure. Optimal for aggressive cutting and hogging.

#### **Hinged Front Chip Guards**

Guards placed in the front of the table allow for operator safety blocking most chips from exiting out the front of the machine. Easy to open for part placement and cleaning.

### Coolant Options

#### **Mist Coolant**

Adjustable nozzles located near the spindle nose dispense a fine spray for tool lubrication during cutting.

#### **Flood Coolant**

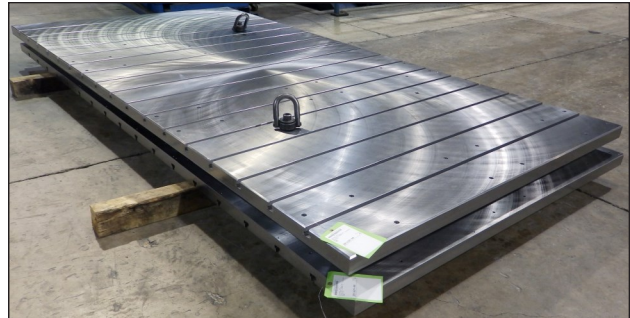
Designed for medium to heavy metal cutting, flood coolant surrounds the cutting surface for chip evacuation and cooling (40 gal/min, 20 psi).

#### **Coolant Through Spindle**

Low or high pressure available (22 gal/min, 120 psi nominal - low pressure - dependant on tool orifice).

### Table Options

- Non-machined aluminum table
- Aluminum table with Keensert inserts on 6" centers
- Machined aluminum universal grid vacuum table (multiple vacuum zones available)
- Steel table with "T" slots



### Non-Perishable Tooling Package

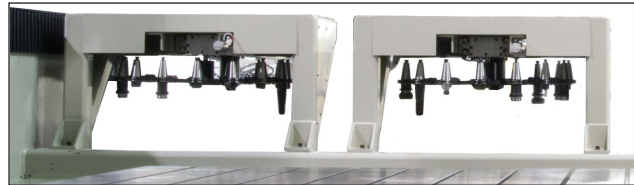
A complete set of tool holders can be supplied as optional equipment, configured per customer requirements.

### Vacuum Pump System

The machine can be supplied with a variety of vacuum pumps with a low vacuum sensing feature. The pumps are very efficient and low maintenance for effective operation in vacuum chuck/clamp applications.

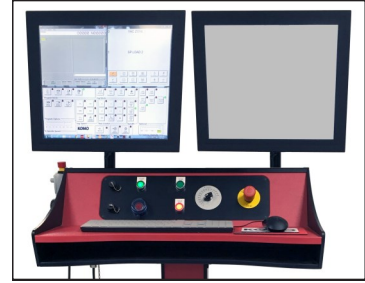
### Additional 15 Pocket Tool Changer(s)

Increase tool capacity by adding up to three (3) additional 15 pocket tool changers (maximum capacity 60 pockets).



### **Dual Screen**

The dual screen option gives you the ability to be running the standard CNC screen with the touch screen interface while running program controls and other operations on the attached 19" screen.



### **Additional Safety Equipment**

KOMO offers a variety of add-on safety equipment that can be configured to any specific model and application, including but not limited to:

#### **Laser Scanners**



#### **Light Curtains**

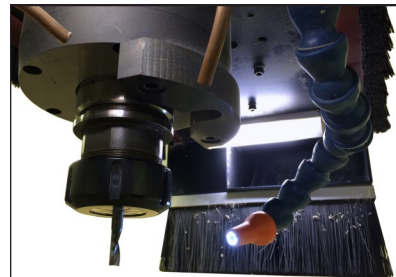


#### **Pressure Mats**



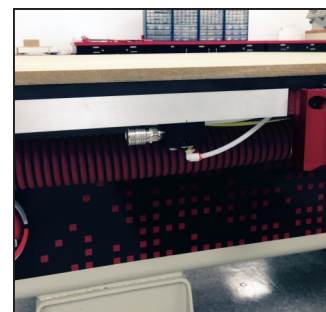
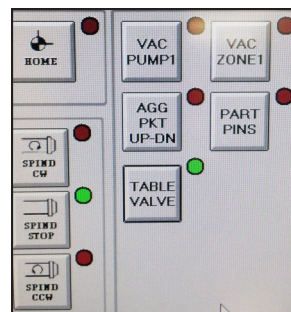
### **KOMO Real Time Tool View**

An industrial-hardened camera (and LED work light) mounted under the spindle (inside the dust shroud) takes continuous video feed of the tool while it is cutting. This video feed is viewable from the machine control screen, and can be viewed remotely as well.



### **Table Fixture Air Supply**

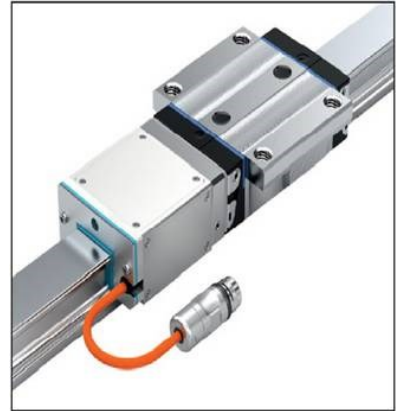
In cases where a vacuum system is not always required for part holding, an air supply can be provided if fixtures will be utilized on the machine table. This option is manually operated by a pushbutton, or can be controlled by an M code in the part program.



## Options for Enhanced Accuracy

### **Integrated Measuring System (IMS)**

Separate positioning feedback is available on the X, Y, V and Z axes of the machine. KOMO utilizes feedback built into the linear guide ways to ensure accuracy and repeatability.



### **Renishaw TS27R Contact Tool Setting Probe**

TS27R is mounted on the machine table. It enables the user to set tool length and diameter of rotating tools, and to detect broken tools.



### **Renishaw RMP600 High Accuracy Touch Probe**

RMP600 is a compact, high accuracy touch probe with radio signal transmission, offering all the benefits of automated job set-up plus the ability to measure complex 3D part geometries on all sizes of machining centers including 5-axis machines.



### **Renishaw NC4 Non-Contact Laser Tool Setter**

NC4 allows fast, non-contact tool setting and tool breakage detection, and precise tool length and tool diameter measurement using only one M code.







► Built for a *Lifetime*



## From Us to You - Since 1966

### Corporate Headquarters

Komo Machine, Inc.  
1 Komo Drive  
Lakewood, NJ 08701 USA

### Manufacturing and Assembly Facility

Komo Machine, Inc.  
2 Komo Drive  
Lakewood, NJ 08701 USA

### Contact Us

Phone: 732-719-6222  
Toll Free: 800-255-5670  
Fax: 732-579-5443  
E-mail: [info@komo.com](mailto:info@komo.com)

Copyright 2018 Komo Machine, Inc. The information presented in this publication was correct at the time of press. Komo Machine, Inc. reserves the right to alter or change specifications without prior notice. Some photos may show protective guarding removed for clarity. Never operate any machine without guarding in place and in operation.



member  
**iapd**  
international association  
of plastics distribution



[www.komo.com](http://www.komo.com)